

TIP 1

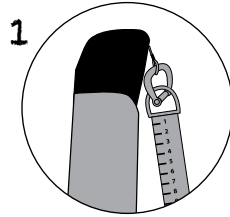
Mast Rake:

For a correct measurement, be sure the main sheet line is in the right position

1) pull the line all the way to the top of the mast.

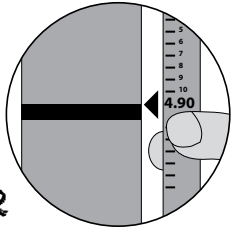
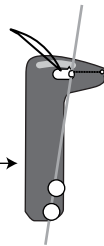
2) As a reference, the top of the black line on the mast (near the boom) must be 4.90 cm.

3) Check out that the line is at the correct place every time you pull it up again.

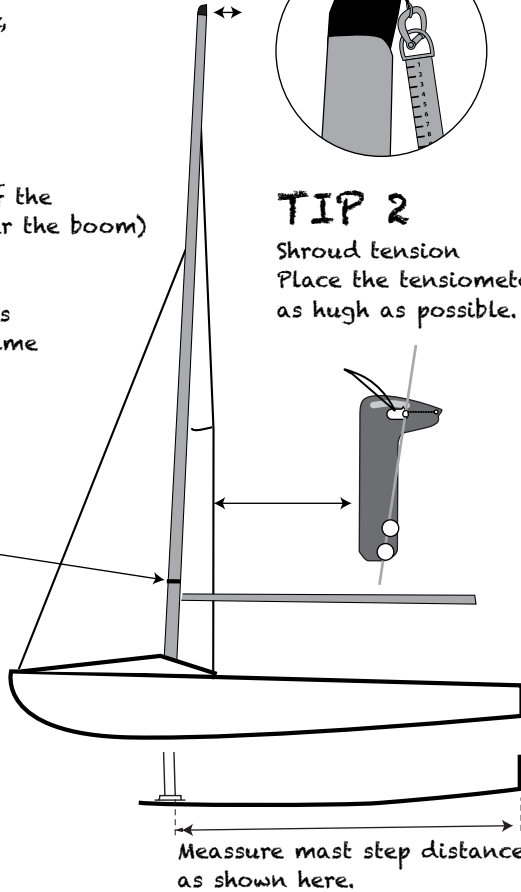


TIP 2

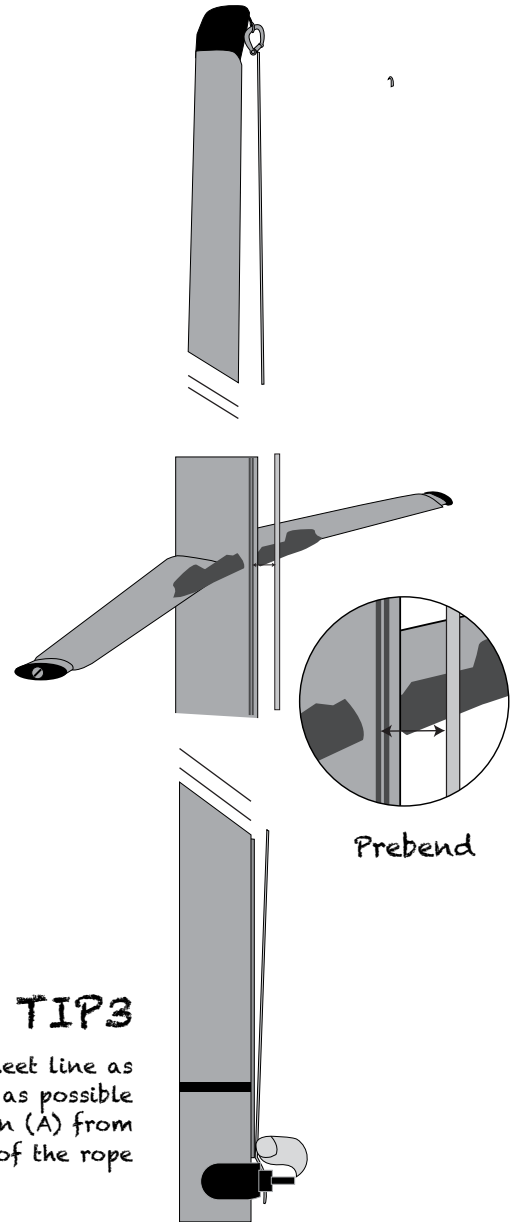
Shroud tension
Place the tensiometer as high as possible.



2



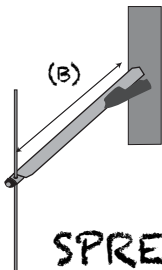
Measure mast step distance as shown here.



Prebend

TIP 3

Hold mainsheet line as tight as possible
Measure prebend in (A) from mast to inner side of the rope



SPREADERS LENGHT

From shroud center to mast. (B)

Jib wire tension

Shroud cable tension

Spreaders length

SETTINGS

Mast rake

Mast prebend

Shroud tension

Mast step

Chocks

NOTES

Tension:

- 1 with 2,5 mm shroud wire

Mast step O position:

from the stern until the back pin of the mast